



Chungnam
National
University

Chungnam National University

THE STRONG CNU

THE STRONG CNU



Chungnam
National
University

DAEDEOK CAMPUS | 99 Daehak-ro, Yuseong-gu, Daejeon 34134 / 042-821-5114

BOWUN CAMPUS | 266 Munhwa-ro, Jung-gu, Daejeon 35015 / 042-580-8116



Website



Facebook



Youtube



Instagram



Blog



CNU CNU Style

Chungnam National University



THE STRONG CNU

Making the impossible possible.
Creating a more significant history
with an institutional commitment
within every single moment.
The spirit of CNU, making every experience
an integrated learning opportunity.

Contents

- 04 Vision
- 06 History
- 08 Highlights
- 12 Education
- 14 Industry-University Cooperation
- 16 Global Networks
- 18 Admissions & Scholarships
- 20 Jobs & Start-ups
- 22 CNU Infra
- 24 CNU People
- 26 Colleges
- 28 Graduate school
- 30 About CNU Hospital

Education
Philosophy

Teaching
Research

Creativity
Development
Service

Nurturing
Talent

Chungnam National University aims to teach and research
profound academic theories and applications crucial to the development of
the nation and humanity while **nurturing talented leaders**
oriented toward **creativity, development, and service.**

School flower
(Rhododendron)



School tree
(Maidenhair tree)



Clock tower



White horse
monument



Pyramid
monument



CNU stone
pagoda



Chungnam National University, we value an innovative future

In celebrating the 70th anniversary, CNU will commemorate its centennial celebration of founding to open a new era. We model integrity by upholding our growth process shift from quantitative to qualitative. The beginning of a new journey to a promising future through collaboration, innovation, and diversity.

CHANGE &
INNOVATION

Under-graduate

Vision

Chungnam National University Creating New Future Values with the Community as a Top-Tier National University in Korea

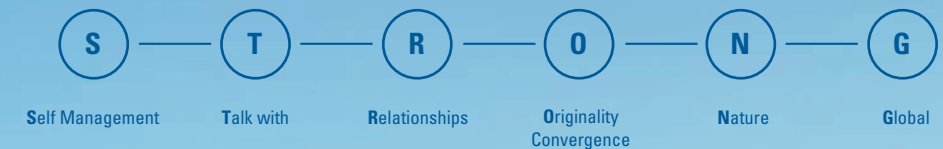
Mission

Talent nurturing

Value creation

Co-Prosperity and Dedication

Core Capabilities



Graduate School

Vision

A world class national university with global competitiveness

Mission

Convergence

Nurturing creativity and convergence for the future

Innovation

Nurturing core leaders with capability for innovation

Sharing

Nurturing local talent oriented toward sharing

Value creating multidisciplinary education and research based on sustainable innovation-driven growth

Core Capabilities



Since 1952 We start our new journey to the 100th anniversary

Chungnam National University established on the belief of education saving the nation amid war in 1952 has nurtured talents to change the world for the next generation. Has contributed to the development of society and humankind through differentiated education. Your tomorrow shines brighter than today with CNU.

HISTORY & FUTURE

1952. 5. 25.
Founded as Chungnam Provincial University

1957. 4. 4.
Graduate school establishment approved

1962. 3. 1.
Reorganized as Chungcheong National University (Merger with Chungbuk University)

1963. 3. 1.
Reorganized as Chungnam National University (Separated from Chungbuk National University)

1981. 7. 29.
University headquarters, Graduate School, College of Economics and Commerce, College of Law moved to Daedeok Campus

1985. 12. 31.
College of Medicine moved to newly built campus (Bowun Campus)

1990. 3. 1.
Graduate School of Industry established

1991. 3. 1.
College of Veterinary Medicine established

1995. 8. 20.
Incorporation of Chungnam National University Hospital

2000. 3. 1.
Graduate School of Intellectual Property Law established

2002. 3. 1.
Graduate School of Peace and Security Studies established

2004. 2. 10.
CNU Industry-University Cooperation Team established

The beginning of
patriotic activities

1952-1989

Enriching the
student experience

1990-2008

2009. 3. 1.
Office of Finances, Office of Admissions established Law School, School of Medicine, Graduate School of Analytical Science and Technology established College of Education, College of Nursing, College of Biological Sciences and Biotechnology, Faculty of Liberal Arts established

2010. 3. 1.
Graduate School of Green Energy Technology, Graduate School of New Drug Discovery and Development established

2013. 3. 1.
Graduate School of Public Administration, Center for Liberal Arts Education, Center for Human Rights, Women Students Career Development Center established

2014. 3. 1.
School of Military Studies Established, Graduate School of Green Energy Technology renamed Graduate School of Energy Science and Technology

2014. 8. 28.
The Office of Government Funded Project Management established the ACE (Advancement of College Education) Agency established

2009-2014

Challenging and
empowering the student

2016. 6. 1.
Office of Graduate School, Career Development Center, Policy Research Team, Daejeon International Development Cooperation Center, Center for Information Analysis, Professional Sports Leader Training Center established

2017. 6. 12.
Leaders in Industry-university Cooperation (LINC) Agency, Foundation of Startup Support, Baekma Social Contribution Center established

2017. 11. 20.
Education Innovation Center established the Industry-Academe Cooperation Connection Center in the Office of Industry-Academe Research, Center for International Cooperation in Asia at the Office of International Affairs established

2018. 9. 3.
Designated as a self-improvement university for the Evaluation Index of Korean Universities in 2018

2019. 7. 1.
University Council established

2020. 2. 28.
Dr. Jin-sook Lee takes office as the 19th President

2020. 5. 14.
Vice President of Research and Industry-University Cooperation established Research Innovation Strategy Team, Office of Regional Cooperation established. Center for Information and Communication reorganized into Office of Information

2021. 2. 8.
Approval for moving into a joint campus of the National Agency for Administrative City Construction (14,990m² of rental area, 35,984m² of sale area)

2021. 2. 25.
Nano-disciplinary (micro-degrees) course

2021. 3. 1.
The Establishment of the Graduate School of Smart Agriculture

2021. 4. 30.
The Establishment of the Institute of Convergence Science

2021. 5. 6.
Regional Innovation (RIS) Project Selected based on Local Government-University Cooperation

2015-2023

Being committed to the
tremendous development

2021. 7. 27.
Notification of the location change plan for the Educational Facility in the Sejong Joint Campus

2021. 9. 1.
The Education Innovation Center and the Basic Culture Educational Institute of the academic affairs office abolished Reorganization into the Committee of Education Innovation, Daejeon, Sejong, and Chungnam Regional Innovation Platform Establishment of a general operation center, the software-oriented project team

2021. 9. 3.
Selected as a government-funded university from a basic competency assessment 2021

2022. 3. 1.
Transition to a 6-year integrated pharmacy education system

2022. 9. 30.
Construction of an intelligent integrated information system

2022. 11. 17.
Approval for Chungnam University's entry into the Daejeon International Science Business Belt (Shin-dong)

2022. 12. 13.
Agreed to move into the Naepo Advanced Industrial Complex in Hongseong County

2023. 4. 12.
Opening of the CNU History Museum

2023. 5. 17.
Selected for regional semiconductor joint research institute projects

2023. 6. 14.
Selected for semiconductor specialization support programs

2023. 10. 13.
Establishment of the STARTUP Co-Op University for Transition of edu, Humanities and Social Convergence Talent Development Project in Response to the Demographic Changes Unit, Humanities and Social Digital Convergence Talent Training Project, and Semiconductor Joint Research Institute

We are dedicated to excellence in higher challenges

Chungnam National University,
which has led Korean education with
extraordinary competitiveness in
specialization, internationalization,
and humanism education, is advancing
innovative ideas and futuristic transitions
with competitive academic programs.
We uphold the highest standards with
achievements from various sectors.

SPECIAL &
VALUE

Industrial Innovation and Infrastructure Construction

World Universities Rankings	University Rankings within South Korea	Regional hub national universities
38 th	6 th	2 nd

2020 THE
(Times Higher Education)

Tied 3rd
place among
regional hub
national
universities

3rd

Peace, Justice and
Strong Institutions

Tied 1st
place among
regional hub
national
universities in
Korea

1st

2018

21.3 billion KRW

- Selected as a key university for the employment connections in national education work scholarship program
- Selected for national university development project
- Selected for university innovation pilot project (PILOT)
- Selected as autonomous improvement university in university basic capacity diagnosis
- LINC+ (Leaders in Industry-university Cooperation) project
- Software Centric University project
- BK21 Plus Phase 3 project
- Engineering Research Center (ERC) support project

2019

27.8 billion KRW

- Selected for university innovation support project
- Selected for leading regional university development project
- Selected for national university development project
- LINC+ (Leaders in Industry-university Cooperation) project
- Software Centric University project
- BK21 Plus Phase 3 project
- Engineering Research Center (ERC) support project

2020

29.2 billion KRW

- University innovation support project
- Leading regional university development project
- National university development project
- LINC+ (Leaders in Industry-university Cooperation) project
- Software Centric University project
- BK21 Plus Phase 3 project
- Engineering Research Center (ERC) support project

2021

19.7 billion KRW

- Chosen as the BK21 project for Stage 4
- Completed projects for key research institutes in universities
- Completed a project for the Basic Research Laboratory (BRLs)
- Implemented a project for the Medical Research Center (MRC)
- Conducted a project for the Regional Leading Research Center (RLRC)
- Phase 2 of the Software-Centric University Project

2022

32.0 billion KRW

- Promotion of the National University Development Project
- Promotion of the University Innovation Support Project
- Phase 4 of the BK21 Project
- Implementing the Software-Centric University Project
- Running the Regional Innovation Leading Research Center (RLRC)
- Implementing the Artificial Intelligence Convergence Innovation Professionals Development Project
- Implementing the Medical Research Center (MRC) Support Project

2023

42.0 billion KRW

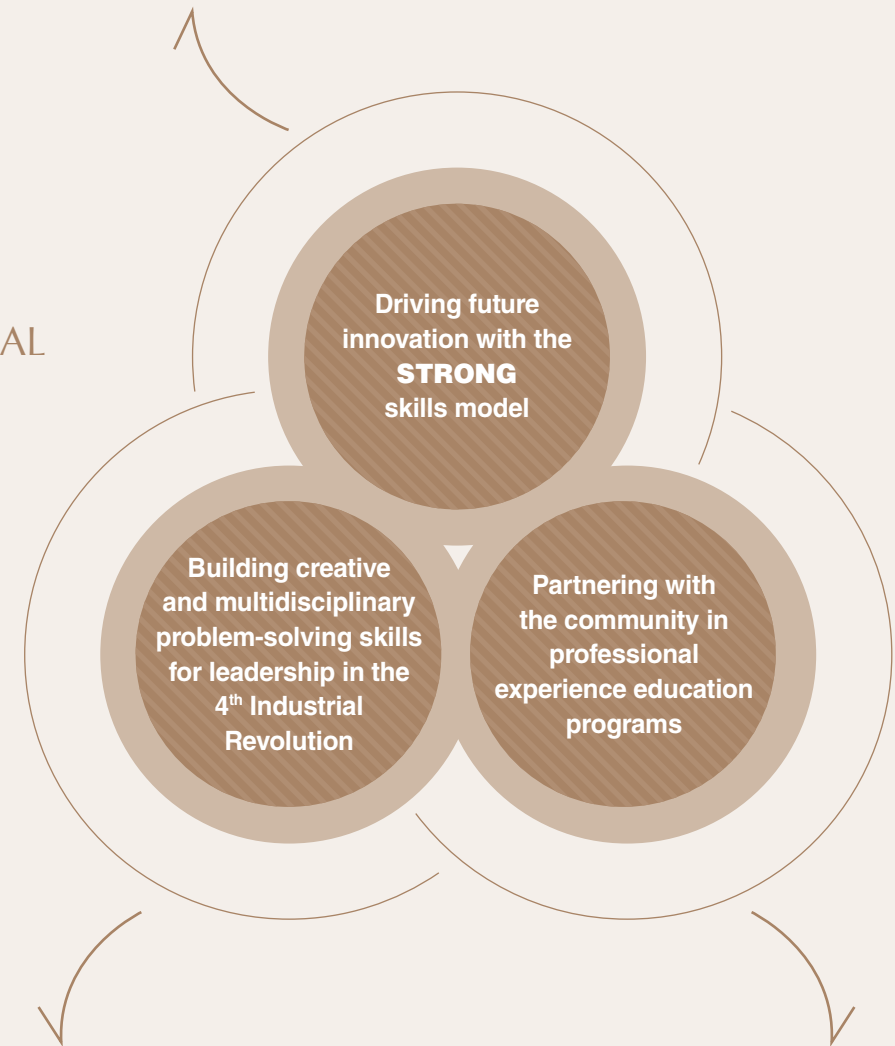
- Promotion of the National University Development Project
- Phase 4 of the BK21 Project
- Implementing the Software-Centric University Project
- Running the Regional Innovation Leading Research Center (RLRC)
- Implementing the Artificial Intelligence Convergence Innovation Professionals Development Project
- Implementing the Medical Research Center (MRC) Support Project
- The Semiconductor Specialization University Support Project
- The Humanities and Social Convergence Professionals Development Project

We foster intellectual, creative students leading the 4th Industrial Revolution

CNU encourages students to challenge themselves by providing integrated learning to penetrate the times. We are committed to fostering students who would lead the era of the 4th Industrial Revolution. We open doors for the future with world-class industry-academic cooperation.

CREATIVE
FUSIONAL

- **Student centric STRONG cultivation curriculum** to nurture intellectuals of outstanding character
- The revision and running of **competency-oriented major education programs** to foster creative professionals
- The establishment and operation of an **Office of Education Innovation** encompassing major, liberal arts, and extracurricular areas
- Operation of mandatory counseling for **future planning program**



- **Establishment of new departments** in cutting edge fields leading the 4th Industrial Revolution
- **Operation of CNU Creative Multidisciplinary Major program:** 25 interdisciplinary majors, 2 self-designed majors, 1 industry-university convergence major
- The administration and mandatory implementation of **software literacy courses** to enhance software capabilities across academic disciplines
- **The running of micro-degree programs** (87 in total) nurturing interdisciplinary talents to respond to accelerating technological innovations and academic advancements in the humanities and social sciences.
- **Baekma Internship program** with local business partnerships
- **Capstone Design course** to **solve real world problems in the local community**
- Startup and entrepreneurship courses to build self-driven learning skills

CNU aims to achieve the vision of world-class industry-academic cooperation

SUPPORT & GROWTH

Our goal is to realize the vision of world-class industry-academic cooperation with continuous support and commitment, which would be a driving force for the 4th Industrial Revolution. We believe the mutual growth of local industry would be realized as the leading university for industry-academic cooperation in Korea.

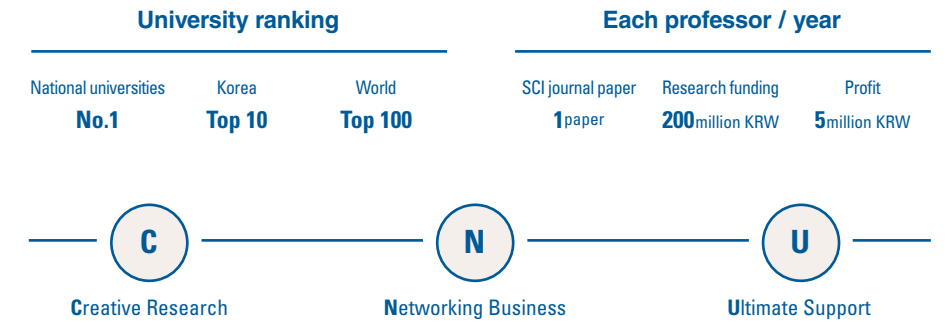
Industry-academic cooperation

Vision

World-class industry-academe cooperation

Mission

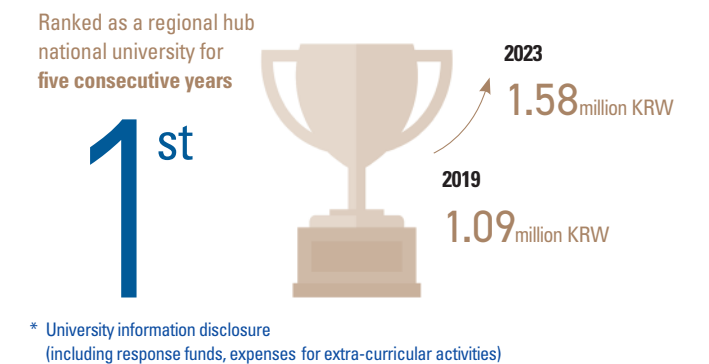
Core Capabilities



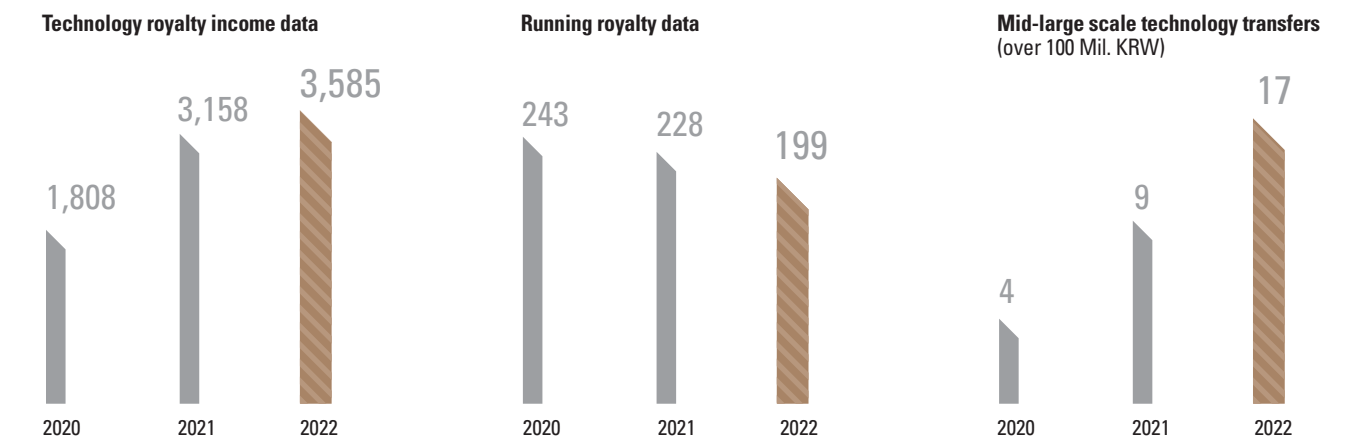
Research institutes



Research funding (received per person)



1 Growth in technology transfers per person (Unit: Mil. KRW)



* The number of technology transfer contracts is approximately twice compared to the average at other national universities
* The average number of technology transfers from regional base national universities was 118 in 2021, as the official disclosure from AcademyInfo

We are committed to fostering global leaders who would encounter a bigger world

CNU offers various global programs through special exchanges with 469 universities and institutions worldwide. We enable students to take an active role in influencing national and international matters. We support students who dream of developing the leadership competencies that would allow them to create meaningful change in society.

Vision

Enhancing university competitiveness through international cooperation and contributions to the community

Mission

National top 10 in globalization capacity-building

Building an international student friendly global campus

Activation of glocal (global+local) network and reinforcing the culture of sharing

Core Strategy

Improvement to and preparing in and outbound academic system

Expansion of twinning / Global OPEN Campus Programs

Building and operating a foundation for a smart global education

GLOBAL LEADER

Europe

Russia	12
Slovakia	1
France	10
Germany	19
Austria	2
England	4
Spain	4
Czech	5
Finland	2
Netherlands	1
Poland	1
Ireland	2
Italy	3
Ukraine	1
Hungary	2
Türkiye	7
Rumania	2
Belgium	1
Kosovo	1
Bulgaria	1
Norway	1
Denmark	1
Lithuania	1

Africa

Congo	1
Egypt	1
Kingdom of Eswatini	1
Sudan	1
Nigeria	1
Zimbabwe	1
Senegal	1
Ethiopia	1
Namibia	2
Other	1

America

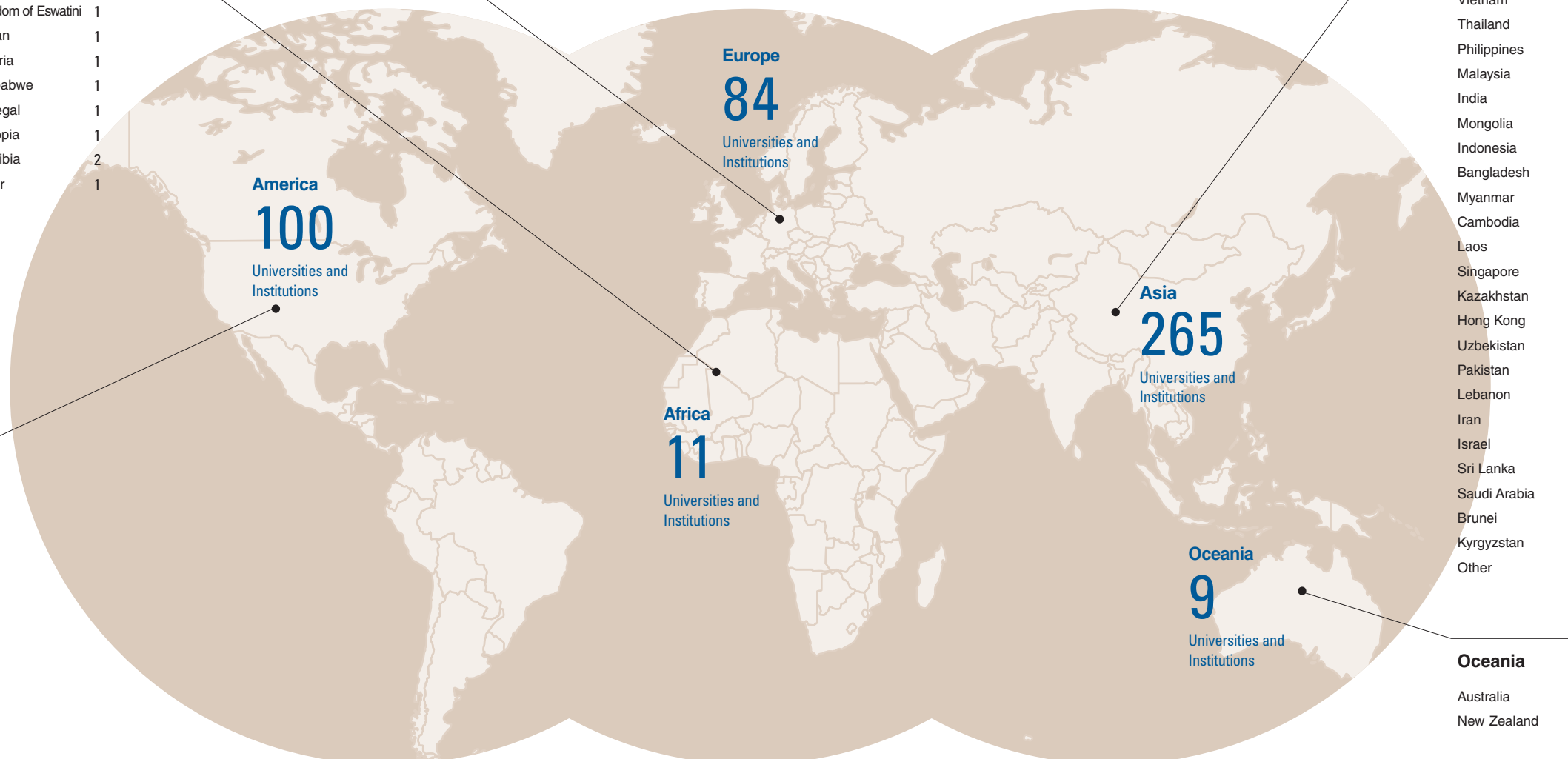
United States of America	81
Canada	9
Brazil	5
Costa Rica	2
Colombia	1
Paraguay	1
Ecuador	1

Asia

Japan	43
China	76
Taiwan	12
Vietnam	24
Thailand	18
Philippines	10
Malaysia	9
India	6
Mongolia	9
Indonesia	18
Bangladesh	2
Myanmar	2
Cambodia	1
Laos	2
Singapore	5
Kazakhstan	4
Hong Kong	1
Uzbekistan	6
Pakistan	2
Lebanon	1
Iran	3
Israel	3
Sri Lanka	3
Saudi Arabia	1
Brunei	1
Kyrgyzstan	1
Other	2

Oceania

Australia	8
New Zealand	1



Sister Universities

67 nations
469 universities and institutions



Students dispatched overseas

Annually
390 students



International students

79 nations
1,092 students

We empower students to concentrate on their studies through our integrated support

We allow students to focus on their studies and develop their dreams with systematic enrollment and scholarship programs. We strive to create and support inclusive funding for students to concentrate on their academic courses without worrying about the financial aspect.

CNU Admissions for Future Leaders

Tuition fees per semester (undergraduate)

Humanities and Social Science	Natural Sciences	Arts and Sports	Engineering	Medicine
1,686,000 _{KRW}	2,123,000 _{KRW}	2,294,000 _{KRW}	2,422,000 _{KRW}	4,154,000 _{KRW}

* Low tuition relative to universities in Korea

Student Dormitories

- Student dormitories where **5,000 students** can live and work toward their dreams
- **277 international students from 47 countries** interact with other students

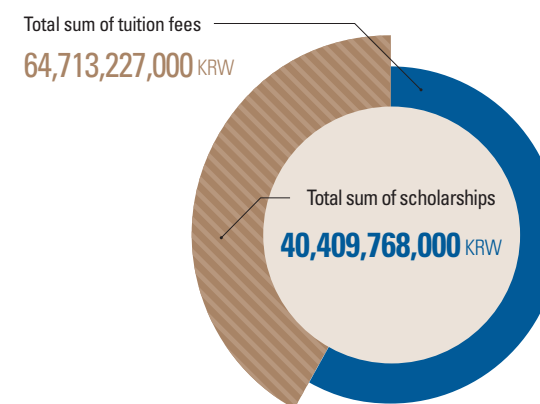
2,688 rooms **5,058** residents

ADMISSIONS & SCHOLARSHIPS

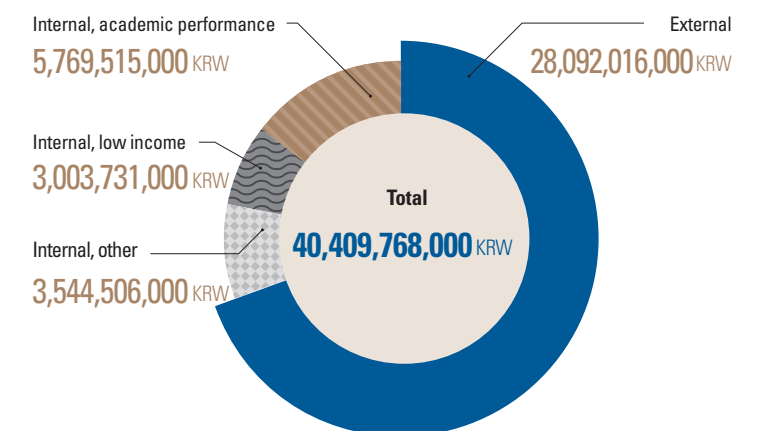
The CNU Scholarship Program to Nurture Creative Leaders

- **Ranked 3rd place in per capita on-campus scholarships among regional hub national universities** (as of August 2023, University Information Disclosure)
- Offers the **best freshman scholarship program** in the country
 - **Full tuition waiver** for all bachelor's, master's, and doctoral programs
 - **15 million won academic research grants** for all bachelor's, master's, and doctoral programs
- **2,467,000 KRW (annual) in scholarships** per undergraduate student

Tuition Fee to Scholarship Ratio (Undergrad/In 2022)



Internal and External Scholarships (Undergrad/In 2022)



We are oriented
towards recognizing
our responsibilities
to enhance our students'
bright futures

CNU ensures that the educational programs are available to all students by serving our mission to foster them as successful members of society. We are committed to providing one-stop system from matriculation to graduation on.

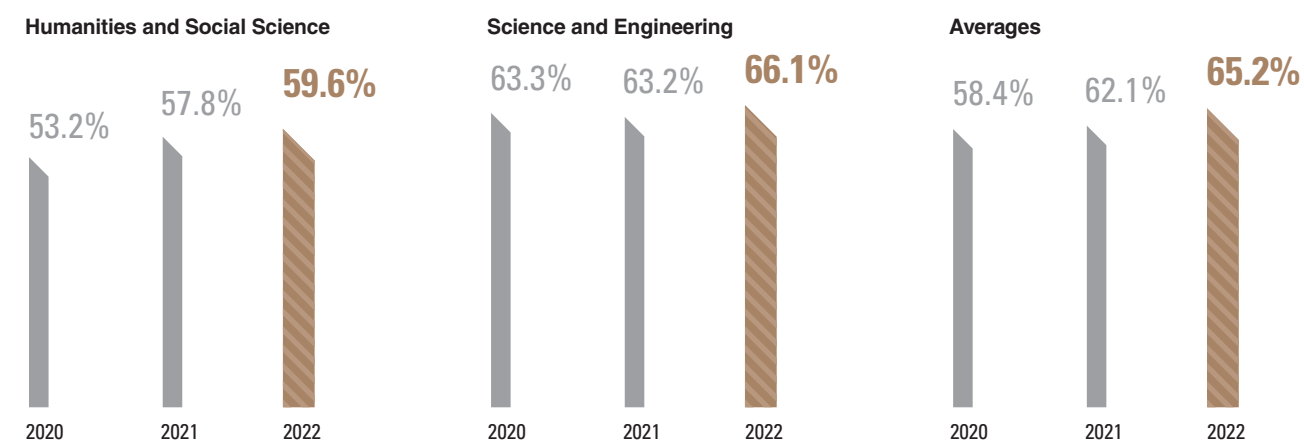
Employment/ Entrepreneurship Program for Entry into Society

All students have to take mandatory entrepreneurship and employment courses, cultivation of the right mindset and entrepreneurial spirit for the real world.



JOBS & START-UPS

Employment status



Participation in Career/Employment Support Programs

Employment courses



Career and employment programs



Field training in Korea and overseas



National work scholarship



CNU has led competitiveness by advancing innovative systems and campus environments in light of the changing times and new social trends. We are committed to enriching academic and professional growth of all students with the latest facilities and excellence in programs as a prestigious global university with a fantastic infrastructure.

We create a climate of
optimal educational
environments



Main Gate



Cyber Lecture Studio



Library Cafe

HAPPY & PLEASANT
CAMPUS LIFE



Campus Map



Smart Lecture Hall



Dormitory



Museum



CNU
International Language
Education Center



Jeong Sim Hwa
International
Cultural Center



Yeongtabji Pond

We allow students to shine in their respective communities

The collegiate experience has a unique and significant influence on personal growth and development. We are committed to the complete development of all students in every aspects of change in the environment in which they live and dream. We demonstrate our commitment to a better future for all students with interaction through our students.

PRIDE & JOY
CNU PEOPLE



Eun-gyeong Jo | Professor at College of Medicine,
Medicine 85

2020 L'Oréal-UNESCO for Women in Science Awards Korea

Professor Eun-gyeong Jo has published many papers in leading international journals while teaching the next generation of medical professionals.

She received the Academic Promotion Award at the 19th L'Oréal-UNESCO for Women in Science Awards Korea. She has been performing creative biomedical research on infectious disease such as tuberculosis and sepsis, as well as congenital immunity. She has also been contributing to the development of medical science as the Director of the CNU Medical Research Center since 2007 -- truly a role model for women in science.



Han-jin Oh | Doctor to the Nation, Medicine 79

Doctor to the nation, Dr. Han-jin Oh

Dr. Han-jin Oh is currently professor at Eulji Medical Center, Department Family Medicine, and a full member of the National Academy of Medicine of Korea, the highest honor for doctors in Korea, as well as the chair of the Korean Academy of Lifestyle Disease, Korean Academy of Menopause and Andropause, and the Korean Society for the Study of Obesity and Health. Not only is he active in academic societies, he also reaches out to the public with accessible and useful information through the news, TV and radio as well as books, contributing to national health as a doctor to the nation.



Woo-young Jeon | Professor, Department of Psychology

Psychology START, No.1 in user satisfaction among 745 K-MOOC courses

As a free online course service run by the Ministry of Education, K-MOOC (Korea Massive Open Online Course) offers the most popular courses from Korean universities. According to the Ministry of Education, the course with the highest level of user satisfaction among the courses offered in 2019 was Professor Woo-young Jeon's Psychology START, an easy and well-organized introduction to psychology suitable for members of the general public with no background in psychology as well as middle and high school students. The Psychology START course offered in the spring semester of 2020 was attended by 2,000 course takers from both Korea and around the world.



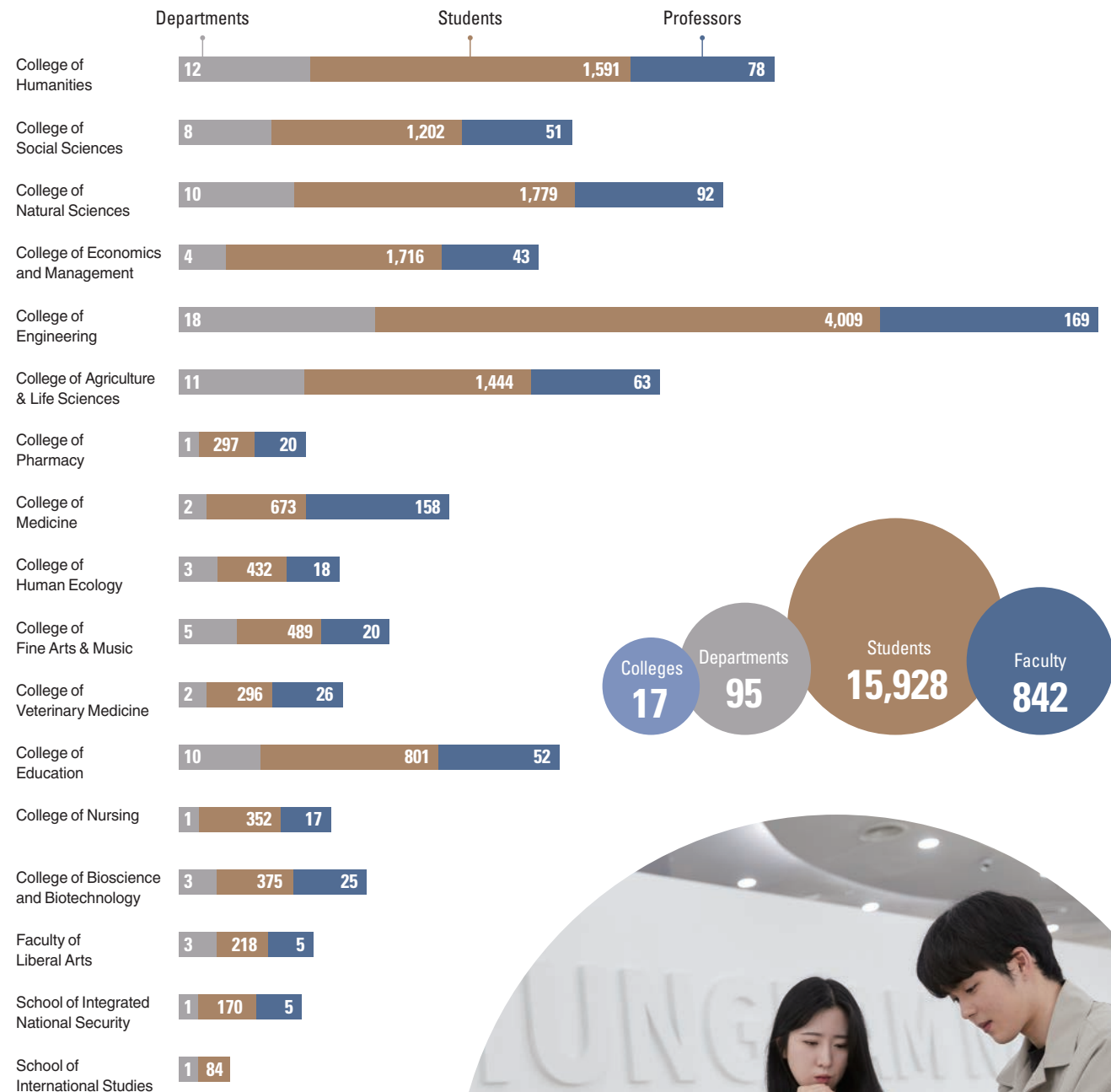
Young-jin Lim | CEO of Seongshimdang,
Department of Textile Engineering 73

Young-jin Lim, CEO of Seongshimdang, the pride and joy of Daejeon

Seongshimdang is a local business that has grown together with Daejeon in its 63-year history under the business motto of "doing things that everyone sees as good." Young-jin Lim took over as CEO of Seongshimdang in 1983 and developed it into the no. 1 Daejeon brand according to the Korean Chamber of Commerce survey. He also serves as the pastoral leader at the Daeheungdong Catholic Church, a Korean representative to EoC (Economy of Communion), and an outstanding role model for local entrepreneurs representing the Korea.

We make a transition from infinite possibilities to future values

CNU provides a challenging and supportive learning environment that fosters achievement and personal competency among undergraduates and graduate students and promotes excellence in creative collaborated educational programs for the 4th industrial revolution.



College of Humanities

Dept. of Korean Language and Literature / Dept. of English Language and Literature / Dept. of German Language and Literature / Dept. of French Language and Literature / Dept. of Chinese Language and Literature / Dept. of Japanese Language and Literature / Dept. of Sino-Korean Literature / Dept. of Linguistics / Dept. of Korean History / Dept. of History / Dept. of Archaeology / Dept. of Philosophy



College of Social Sciences

Dept. of Sociology / Dept. of Library and Information Science / Dept. of Psychology / Dept. of Communication / Dept. of Social Welfare / Dept. of Political Science and Diplomacy / School of Public Administration / Dept. of Urban-Autonomous Convergence



College of Natural Sciences

Dept. of Mathematics / Dept. of Information & Statistics / Dept. of Physics / Dept. of Astronomy & Space Science / Dept. of Chemistry / Dept. of Biochemistry / Dept. of Geology and Earth Environmental Sciences / Dept. of Oceanography & Ocean Environmental Sciences / Dept. of Sport Sciences / Dept. of Dance (Korean Dance, Modern Dance, Ballet) / Dept. of Semiconductor Convergence (Established on March 1, 2024)



College of Economics and Management

Dept. of Economics / School of Business / Dept. of International Trade



College of Engineering

Dept. of Architecture (5-year) / Dept. of Civil Engineering / Dept. of Environmental Engineering / School of Mechanical Engineering / Dept. of Mechatronics Engineering / Dept. of Aerospace Engineering / Dept. of Electrical Engineering / Dept. of Electronics Engineering / Dept. of Radio and Information Communications Engineering / Division of Computer Convergence / Dept. of Materials Science & Engineering / Dept. of Chemical Engineering and Applied Chemistry / Dept. of Organic Materials Engineering / Dept. of Smart City Architectural Engineering / Dept. of Autonomous Vehicle System Engineering / Dept. of Artificial Intelligence / Dept. of Energy Engineering (Established on March 1, 2024)



College of Agriculture & Life Sciences

Dept. of Crop Science / Dept. of Horticultural Science / Dept. of Environment & Forest Recourses / Dept. of Bio-based Materials / Division of Animal & Dairy Science / Dept. of Applied Biology / Dept. of Bio-Environmental Chemistry / Dept. of Food Science & Technology / Dept. of Rural Infrastructure Engineering / Dept. of Biosystems Machinery Engineering / Dept. of Agricultural Economics



College of Pharmacy

Dept. of Pharmacy



College of Medicine

Dept. of Premedical / Dept. of Medicine



College of Human Ecology

Dept. of Clothing & Textiles / Dept. of Food & Nutrition / Dept. of Consumer Science



College of Fine Arts & Music

Dept. of Music (Vocal, Composition, Piano) / Dept. of Orchestral Instruments (Wind Music, String Music) / Dept. of Fine Arts (Korean Painting, Western Painting) / Dept. of Sculpture / Dept. of Design and Material Studies (Ceramics & Textile Design / Visual & Product Design)



College of Veterinary Medicine

Dept. of Pre-Veterinary Medicine / Dept. of Veterinary Medicine



College of Education

Dept. of Korean Education / Dept. of English Education / Dept. of Mathematics Education / Dept. of Education / Dept. of Physical Education / Dept. of Construction Engineering Education / Dept. of Mechanical Engineering Education / Dept. of Electrical & Electronics & Communication Engineering Education / Dept. of Chemical Engineering Education / Dept. of Technology Education



College of Nursing

Dept. of Nursing



College of Bioscience and Biotechnology

Dept. of Biological Science / Dept. of Microbiology and Molecular Biology / Dept. of Bioinformation Convergence



Faculty of Liberal Arts

General Studies / Leadership and Organizational Sciences / Public Safety



School of Integrated National Security

Dept. of Homeland Security Studies / Dept. of Maritime Security Studies



School of International Studies

Dept. of International Studies



CNU provides an environment supportive of teaching, research, and services to bring a global perspective to all its activities to change the life of humankind and promote academic values. The graduate school strives for students fully committed to goals and objectives for fostering qualified students.

CNU seeks the truth through a sincere commitment to education and research

Student **4,590**

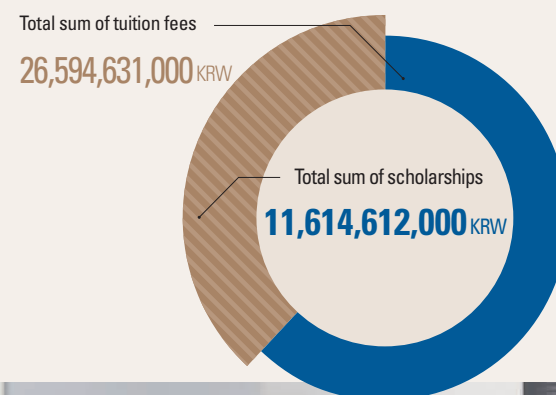


Tuition fee per semester (average/In 2023)

General Graduate School	2,944,000 KRW
Professional School	4,488,000 KRW
Specialized Graduate School	2,290,000 KRW

Average annual scholarship funding per person **2,366,000 KRW**

Scholarship to tuition ratio (In 2022)



GRADUATE SCHOOL

General Graduate School

Nurturing talent to contribute to humanity

Master's Programs

81

Doctoral Programs

79

Interdisciplinary Programs (Master's)

17

Interdisciplinary Programs (Doctoral)

16

Professional Graduate School

Training top class professionals

Law School

Graduate School of Analytical Science and Technology
Graduate School of Energy Science and Technology
Graduate School of Drug Development and Discovery

4

Specialized Graduate School

Producing specialists for modern society

Graduate School of Business Administration
Graduate School of Education
Graduate School of Public Administration
Graduate School of Public Health
Graduate School of Industry
Graduate School of Intellectual Property Law
Graduate School of Peace & Security Studies
Graduate School of National Public Policy
Graduate School of Smart Agriculture

9

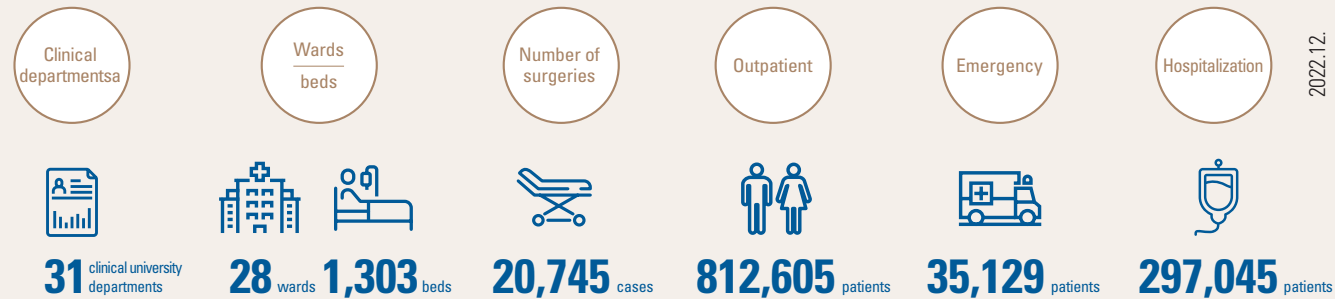


CNU Hospital and its branch hospital, Sejong CNU Hospital, prioritize our health and happiness by employing advanced medical systems and specialized treatment centers. We work to be trusted by patients with valued and renowned healing art of medicine and innovative medical devices.

Experience
heartwarming
care and the
highest level of
professionalism

MEDICAL &
HEALTH

1st



Shining
Accomplishments of
Chungnam National
University Hospital

Chungnam National University Hospital, Sejong Chungnam National University Hospital

1st grade in acute myocardial infarction suitability / Health Insurance Review and Assessment Service

Outstanding hemodialysis center certification / Korean Society of Nephrology

1st grade in use of antibiotic prophylaxis / Health Insurance Review and Assessment Service

1st grade in pneumonia suitability / Health Insurance Review and Assessment Service

1st grade in chronic obstructive pulmonary disease (COPD) suitability / Health Insurance Review and Assessment Service

A grade in genetic testing accuracy / Ministry of Health and Welfare

Highest grade in regional cardio-cerebrovascular disease center project performance / Ministry of Health and Welfare

1st grade in colon cancer, breast cancer, lung cancer, gastric cancer suitability / Health Insurance Review and Assessment Service

1st grade in acute stroke suitability / Health Insurance Review and Assessment Service

A grade in public health business performance / Ministry of Health and Welfare

1st among national universities located outside of Seoul in NCSI / Korea Productivity Center

A grade in public institution customer satisfaction survey / Ministry of Economy and Finance

1st grade in anti-corruption initiative assessment / Anti-Corruption and Civil Rights Commission

A grade in public institution management performance / Ministry of Education

